



PROYECTO: P5SL – PASCUA LAMA

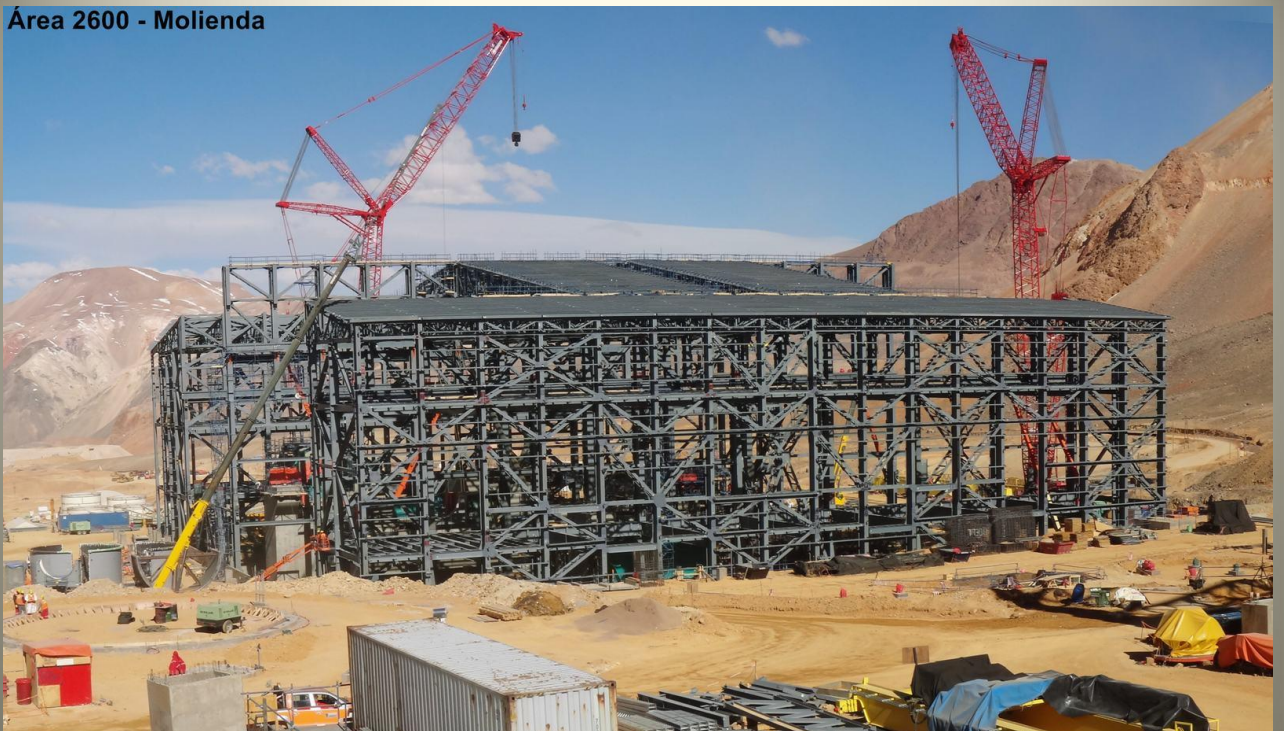
- **Owner:** Barrick Gold (B.E.A.S.A)
- **Location:** Lama, San Juan, Argentina and Pascua, Chile.
- **Surface:** 10.000 square metres
- **Weight:** 8.000 tons.

This construction site is the first binational mining business venture between Argentina and Chile, consolidating the mining integration policy between both nations.

It is located four thousand and eight hundred metres above sea level, where eight thousand tons of steel shape a ten thousand square metre sturdy Mill Building, capable of enduring strong winds, earthquakes and snow storms.

At present we are still working on this mining project that will be due in 2015.

Área 2600 - Molienda



PROYECTO: P5SL – PASCUA LAMA



Area Molienda



© Pascua-Lama Project - 11 Oct

PROYECTO: P5SL – PASCUA LAMA



PROYECTO: P5SL – PASCUA LAMA

